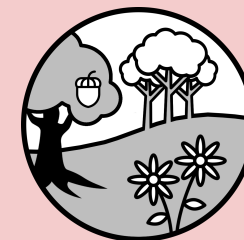


Parent and Carer Questionnaire

Spring 2025



Thank you very much to parents and carers for completing the questionnaire and for your comments and responses about our school. We had 200 responses and have compiled the results to share with you below.

These results will be discussed and shared with key stakeholders of Wood Field Primary School so that we can make our school an even better place to be for our pupils and parents. Parents' suggestions are gratefully received and will be considered when setting priorities for future school improvement.

	Question	Agree or strongly agree	Disagree or strongly disagree	Do not know
1	<p>My child is happy at school</p> <p><i>We are very pleased that 86% of you say your child is happy at school. We see children arriving at school with smiles on their faces every day. This positive mindset means they are ready to learn as soon as they arrive in class.</i></p>	86%	10%	4%
2	<p>My child feels safe at school</p> <p><i>We take looking after your children's safety both physically and mentally very seriously in our school and consider this essential every day at Wood Field and are very pleased 91% say your children feel safe. Please refer to</i></p>	91%	7%	2%

	<p>our schools safeguarding page on the website for more information: https://www.woodfieldprimary.com/page/?title=Safeguarding+at+Wood+Field&pid=64</p>			
3	<p>The school makes sure its pupils are well behaved <i>Behaviour is excellent at Wood Field. Our behaviour Policy is clear and our school drivers link into the rewards and sanction system for praise and behaviour points. External visitors to Wood Field, such as visitors from Greenshaw Learning Trust and Senior Leaders from other schools always comment on the children's outstanding behaviour both inside the classroom and on the playground.</i> <i>Where behaviour incidents do happen, consequences are issued according to our policy. For more information, please visit our website:</i> https://www.woodfieldprimary.com/page/?title=behaviour+points&pid=39 <i>If you have concerns regarding behaviour, please do contact your year group inbox as the first port of call.</i></p>	73%	19%	8%
4	<p>The school deals with any bullying quickly and effectively <i>We take all incidents of bullying very seriously and on the rare occasions it occurs, we will follow it up rigorously. If you have any concerns about incidents of bullying in school please do not hesitate to contact a member of the Senior Leadership Team. If you feel an issue has not been resolved please follow the channels of communication which shows how your issues should be escalated. Please see our website:</i> https://www.woodfieldprimary.com/page/?title=Parental+Engagement&pid=43 <i>Where parents have voted 'Do not know' we assume this means their child has not been involved in any bullying.</i></p>	48%	20%	32%
5	<p>The school shares with me the learning that will take place throughout the year</p>	84%	13%	3%

	<p><i>This is great to hear that 84% of our parents feel that they receive adequate communication about learning in their child's class. Please do check our website to see the curriculum map for your child's year group: https://www.woodfieldprimary.com/page/?title=Reception&pid=51</i></p> <p><i>Please also look out for the weekly year group newsletter and half termly whole school newsletter which provide further updates. We have previously delivered training for parents on various areas of the curriculum via zoom and in person, but have had very low uptake. Please do let us know if you have any specific areas you would appreciate a deeper knowledge of.</i></p>			
6	<p>When I have raised concerns with the school, they have been dealt with efficiently and effectively</p> <p><i>As a school we want to deal with any concerns in a prompt manner and in a way that satisfies all concerned. We recognise that not everyone will be happy in the decisions that are made regarding concerns involving their children. We follow policy when dealing with concerns and do our very best to resolve concerns promptly. Please familiarise yourself with the channels of communication document which shows how a concern will be addressed and by who.</i></p> <p>https://www.woodfieldprimary.com/page/?title=Parental+Engagement&pid=43</p>	64%	21%	15%
7	<p>The school has high expectations for my child</p> <p><i>Our school motto is 'We Are Limitless'. We have high expectations of all our children and want each and every child to do their best at all times. We will talk to parents if we are concerned that your child is not trying their best in class and teachers will employ a variety of strategies to support children if this is the case.</i></p> <p><i>Our SATs results show the exceptionally high standards we have with</i></p>	66%	18%	16%

	<p>above national average results across the board. Our greater depth results are significantly above the national average please see the results on our website:</p> <p>https://www.woodfieldprimary.com/page/?title=Performance&pid=31</p>			
8	<p>My child does well at this school</p> <p><i>We are pleased with the levels of progress across the school. Our teachers work hard at meeting individual needs for children at all levels of abilities, leading to good levels of progress for all. This is reflected across the school in the statutory assessments with our school being above national average in end of KS2 assessments, as well as at other key assessment points.</i></p>	80%	16%	4%
9	<p>The school lets me know how my child is doing</p> <p><i>Communication between home and school is a really important factor for ensuring the best outcomes for your children. We have good attendance at progress evenings twice a year and provide a written end of year report. Alongside this, we have our year group email addresses allowing parents to request a meeting at any time to discuss progress or concerns. We are aware that MCAS has some issues which make searching for information tricky and we are working on using our website to communicate some important information in a more accessible fashion. The MCAS app also allows you to track your child's attendance and praise and behaviour points.</i></p>	75%	23%	2%
10	<p>My child can take part in a range of clubs at this school</p> <p><i>We have a range of clubs available at Wood Field, some delivered by our staff and others by outside providers. We are aiming to run more lunchtime clubs after half term and enter into more sporting competitions to give more pupils the chance to represent the school.</i></p>	76%	16%	8%
11	<p>The school supports my child's wider personal development</p> <p><i>As a school, we have been looking at ways to develop the enrichment</i></p>	65%	20%	15%

	<i>provision for our children. We already have school trips, residential, workshops and visits throughout the year and are developing the clubs that are on offer to children. We have made contact with local care homes to initiate a pen pal system. We are also looking to invite parents into school to deliver assemblies with a career ambition focus.</i>			
12	I would recommend the school to another parent <i>77% of parents would recommend Wood Field to another family, which is good. 23% indicated that they would not recommend the school to a friend. We hope that where there is such strong feeling parents would feel confident to express their concerns directly to the school in order that they can be discussed and addressed if necessary.</i>	Yes 77%	No 23%	

Do you have any other positive comments to share?

The feedback about Wood Field Primary School is overwhelmingly positive, with parents expressing satisfaction with the school's environment, teaching quality, and support systems. We had 62 positive comments recorded from our 200 total responses. Here's a summary:

- **Happiness and Engagement:** Many parents noted their children are happy, love learning, and are excited about school activities. This reflects the school's welcoming and nurturing environment.
- **Supportive Staff:** Teachers and teaching assistants are highly praised for their attentiveness, approachability, and care. Several parents mentioned specific teachers who have gone above and beyond to support their children, especially during challenges.
- **Communication:** Tools like Class Dojo, newsletters, and Instagram updates are appreciated for keeping parents informed about activities and their child's progress.
- **Inclusive Environment:** The school is seen as supportive of children's mental well-being, providing a nurturing atmosphere that encourages confidence and academic growth.
- **Facilities and Resources:** Parents are pleased with the well-equipped classrooms, outdoor spaces, and a wide range of activities and trips offered to students.

The school would be even better if...?

We had 92 suggestions for improvement made from our 200 total responses. The key themes and suggestions for improvement were:

1. Communication Challenges:

- **Volume of messages:** Overwhelming number of non-urgent messages sent via MCAS, leading to important ones being missed.
- **Timeliness:** Late or last-minute notices about events or changes.
- **Consistency:** Confusion when communication comes from multiple channels (app, email, WhatsApp groups, etc.).
- **Parent-teacher communication:** Desire for more regular, detailed, and personalized progress updates outside of parents' evenings.
- *We are looking into using our website to provide key information in a more accessible way. More information will follow after half term.*

2. Homework and Academic Support:

- **Lack of homework:** Many parents request more structured and regular homework across all age groups.
- **Support for struggling students:** Need for additional resources and timely updates for children falling behind.
- **Challenging high achievers:** Concerns that children who excel are not being pushed further.
- *We are in the process of developing home learning pages on our website. We are also looking into setting up Atom Learning for all of our KS2 children. More information will follow.*

3. Behaviour and Classroom Management:

- **Disruptive behaviour:** Frustration over inadequate handling of poorly behaved pupils, leading to loss of valuable learning time.
- **Behavioral support:** Desire for better management of challenging behaviours and emotional regulation.
- *Behaviour in school is overall very impressive. Where a pupil may display challenging behavior, their emotional regulation is prioritised quickly and efficiently with the desire to cause as little impact on the learning of others.*

4. Extracurricular and Play:

- **Clubs and activities:** Parents want more variety, inclusivity (e.g., for SEND students), and availability of extracurricular activities like art, drama, and sports.

- **Playground improvements:** Requests for more equipment and structured play activities during breaks.
- **Physical activity:** Desire for increased physical education opportunities, especially on rainy days.
- *As the weather improves, there will be new equipment ordered for the playground. We are looking at our clubs offer and hope to be able to provide more opportunities.*

5. School Events and Facilities:

- **Event organization:** Better planning to avoid scheduling conflicts and clearer instructions for events/trips.
- *The main school calendar is planned a year in advance including school trips and celebration days/weeks. This is communicated via MCAS calendar. We are aware that MCAS isn't functioning as we would like it to and are looking into using Google calendar for key dates and events through our website for next academic year.*

6. Emotional and Pastoral Care:

- **Parental involvement:** Regular updates on interventions for struggling children and available pastoral care resources.
- **Celebrating achievements:** Parents want more emphasis on celebrating and communicating children's successes.
- *Currently children can earn weekly shout outs, praise points, with certificates and prizes for reaching 50, 100 and 150 and well done postcards from senior leadership for exemplary work. Children are invited to bring trophies into school to share achievements from outside clubs during assembly. We are looking into awarding certificates to celebrate success in other areas of the curriculum as well.*

7. Administrative Concerns:

- **Teacher shortages:** Concerns about frequent changes in staff and lack of adequate teaching assistants.
- **Resource allocation:** Perceived inefficiency in spending on underutilized initiatives, with a preference for investing in classroom resources or staff.
- *There is a nationwide teacher shortage currently, however at Wood Field we are faring very well with this and have a permanent member of staff in every class. Current school budgets do not allow for us to employ any more teaching assistants and we currently have more than most local schools. The direct funding we receive for pupils in school has not been spent on Forest School. This has been paid for entirely with PSA funds.*

8. Special Education Needs (SEN):

- **Support for SEN students:** Better communication about interventions and consistent teaching styles for children with learning challenges.
- **Inclusivity:** Adjustments needed for after-school clubs and classroom teaching to cater to different learning styles.
- *All SEND communication is via a dedicated SEND inbox with response guaranteed within 3-5 working days. The SEND team*

offers frequent conversations and meetings, initiated by school and parents. Many SEND processes have incredibly long waiting lists that unfortunately we cannot change, as much as we would very much like to! In school senior leaders conduct regular SEND learning walks to monitor the consistency of teaching and observe the implementation of new strategies.