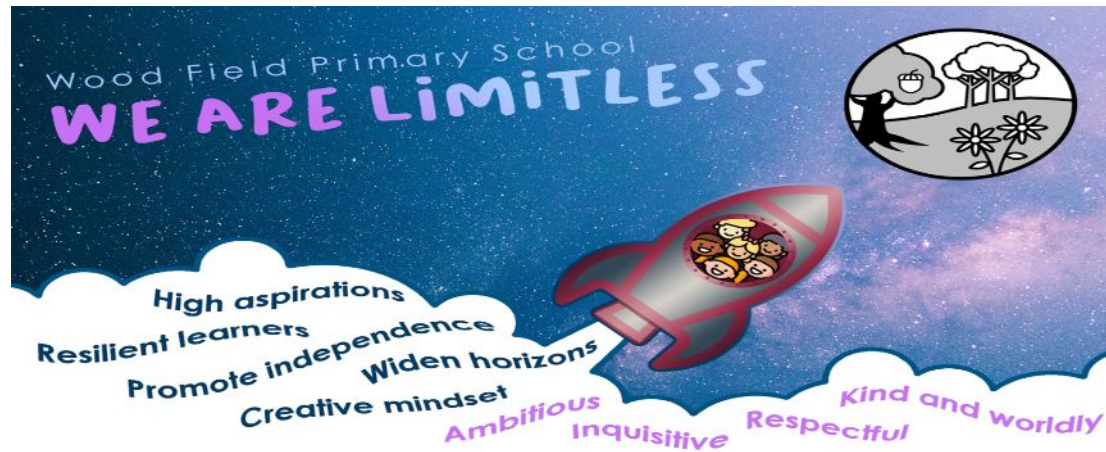




Welcome to Year 1!



Teachers and Teaching Assistants



Miss Greenwood
EYFS / Key Stage 1
Lead



Mrs Ebrahim
Butterflies class
teacher
Year One Lead



Mrs Marwaha
Bumblebees
class teacher



Mrs De Haas
Bumblebees
class teacher



Mrs Berry
Teaching assistant
Butterflies



Miss Theis
Teaching assistant
Bumblebees

Drop off and pick up

The children can arrive at school from 8.35 am where they will complete morning work. We encourage children to arrive as early as they can so this learning can be completed and they can settle into their day.

The children will say goodbye in the main playground and enter through the main brown doors.

The school gates will open at 3.10pm for collection.

All year 1 classes will be lined up in the playground, on the grassy area by the main school building.

Please wait for the class teacher to dismiss the children one by one.

If you wish to speak to the class teacher, please wait until all the children have been dismissed and they will happily do so at this point.

Behaviour expectations



- ▶ In Year One, we use a behaviour chart consisting of five stages.
- ▶ Everyone starts on the sun every day. The children can reach the rainbow or shooting star through consistent good behaviour or outstanding personal progress.
- ▶ If a child demonstrates inappropriate behaviour e.g. consistently talking on the carpet, they will be given a warning and, if the behaviour fails to improve, they will be moved to the white cloud. If the child gets onto the rain cloud, you will be informed by MCAS app in the form of a behaviour point.
- ▶ The children also receive Dojo/praise points in Year One for demonstrating a range of positive behaviours such as helping others, kindness, participating well and trying hard.





Behaviour Point Sanctions/Consequences Over a half term:

Behaviour Point	Sanction
1/2/3	Missed playtime
4/5	Miss all playtimes that day/next 2 playtimes dependent on time when BP issued. Phone call/face to face conversation with parent/carer
6	As above/sanction decided by SLT/Phase Manager Meeting in school with parent/carer, phase manager and class teacher.

PE days



- ▶ PE lessons will take place on the following days:

Bumblebees – Tuesdays & Fridays

Butterflies – Tuesdays & Fridays

(After October half term this will be changing to Tuesdays and Thursdays).

Please remember that PE kits need to be worn to school on these days.

Children should not wear earrings to school on these days unless they can remove them independently.

Topics



Autumn 1	Autumn 2	Spring 1	Spring 2	Summer 1	Summer 2
Art & Design: Painting: Colour Splash Art & Design: Drawing: Make your mark History How am I making History? Science: Seasonal Changes	DT: Cooking and nutrition: fruit and vegetables Geography: What is it like here? Science: Everyday Materials	Art & design: Sculpture & 3D: paper play History: How have toys changed? Science: Sensitive Bodies	DT: Textiles: puppets Geography: What is the weather like in the UK? Science: Comparing Animals	Art & design: Craft and design: Woven Wonders History: How have explorers changed the world? Science: Introduction to Plants	DT: Mechanisms: moving story book DT: Mechanisms: wheels and axels Geography: What is it like to live in Shanghai? Science: Investigating through stories

Trips and visits

Autumn- Weather workshop in school (13th October)

Spring – Local walk

Summer- Visit to Ecology Centre, Carshalton.

Butterflies class to visit on Monday 11th May 2026 and

Bumblebees class to visit on Monday 18th May 2026.

Year 1 Assessments



- ▶ Year 1 children will sit their Phonics Screening Check in June 2026. They will have daily phonics lessons to learn new sounds and to consolidate and build upon all their prior learning from Reception.
- ▶ We will be sending out further information about the screening and how to best support your child in the coming weeks and throughout the year.

Reading

- ▶ As in Reception, the children will have reading sessions with their teachers and teaching assistants following the scheme, Little Wandle Letters & Sounds.
- ▶ They will already be familiar with the reading book they bring home on a Friday and this is great news! The aim is the children build up their reading fluency of the book and share this with you at home. By continuing to read this book over the week, this will hugely aid the children's reading fluency.
- ▶ Please can reading books be returned the following Wednesday.
- ▶ The children will visit the school library and this will encourage the children to choose books independently and hopefully develop a love for reading.
- ▶ Please try and record the books your child has read on the new online reading record 'Track my Read'. All children should have received a log in for this. Please speak to the class teacher if any log in details have been misplaced.



Year 1 and 2 Common Exception Words

Year 1		Year 2	
the	they	door	gold
a	be	floor	hold
do	he	poor	told
to	me	because	every
today	she	find	great
of	we	kind	break
said	no	mind	steak
says	go	behind	pretty
one	so	child	beautiful
were	by	children	after
was	my	wild	fast
is	here	climb	last
his	there	most	past
has	where	only	father
I	love	both	class
you	come	old	grass
your	some	cold	pass
			plant
			path
			busy
			people
			hour
			water
			again
			half
			prove
			improve
			money
			Mr
			sugar
			eye
			could
			parents
			Christmas
			everybody
			even

Grow the code grapheme mat Phase 2 and 3

S	s	t	tt	p	pp	n	nn	m	mm	d	dd	g	gg	c	cc	r	rr	h	
ss	tt	pp	nn	mm	dd	gg	cc	rr	h										
se	ce	st	sc	gn	mb	ck	ch												
b	bb	f	ff	l	ll	j	dge	v	vv	w	wh	x	y	z	zz	s	se	ze	qu
ch	tch	ture	ch	ti	ssi	si	ci	th	ng	nk	a	ea	i	y	o	a	u	o-e	ou

Home Learning

Reading

- ▶ Children are expected to read **at least 4 times per week**. This could be their Little Wandle book, their library book or a book from home.
- ▶ Please try and record the books your child has read on 'Track my Read'.
- ▶ A phonics information sheet will be sent home every Friday which outlines the sounds, words and sentences we have been learning to read and write in our phonics sessions over the week. Any additional practise of these at home will be really beneficial to support the children with their reading and writing.

NUMBOTS

Please ensure your child logs in regularly to make use of this online platform. It is a fun and engaging way of learning maths skills and improving a child's recall speed. Passwords will be sent out asap.

Year 1 and 2 Common Exception Words			
Year 1		Year 2	
the	they	door	gold
a	be	floor	hold
do	he	poor	told
to	me	because	every
today	she	find	great
of	we	kind	break
said	no	mind	steak
says	go	behind	pretty
are	so	child	beautiful
were	by	children	after
was	my	wild	fast
is	here	climb	could
his	there	most	last
has	where	only	past
I	love	both	father
you	come	old	class
your	some	cold	grass
			pass
			plant
			path
			bath
			hour
			move
			again
			half
			money
			Mr
			Mrs
			parents
			Christmas
			everybody
			even



Grow the code grapheme mat										Phase 2, 3 and 4	
S	t	p	n	m	d	g	c	r	h		
s	tt	pp	nn	mm	dd	gg	ck	rr	h		
c			kn	mb			ck	rr	h		
ce			gn				cc	rr	h		
st							ch	rr	h		
sc								rr	h		
b	f	l	j	v	w	x	y	z	qu		
bb	ff	ll	jj	vv	wh			zz	ss		
	ph	le	dge	ve				se	ze		
		al	ge					ze			
ch	sh	th	ng	nk	a	e	i	o	u		
tch	ch				ea		y	a	o-e		
ture	ti							ou	ou		
	ssi										
	si										
	ci										



Weekly Library Visit



Library books – Year 1 will visit the school library once a week and will bring home a book of their choice. Please remember to return the library book the following week.

Library Days:

Butterflies Class – Mondays

Bumblebees Class – Fridays

Support at home

In Year 1 we encourage parents and carers to work in partnership with us to support their child's learning.

You can make a big difference by supporting us in the following ways:

Reading: Please do encourage your child to read at home to improve their confidence and fluency.

NumBots: More information to follow soon.

There will be some resources sent out soon to support your child's learning, which you may wish to refer to at home.

- ▶ Phonics sound mats
- ▶ The high frequency and common exception words children are expected to learn in Year One.
- ▶ 100 squares for maths
- ▶ Handwriting support



Year 1 and 2 Common Exception Words					
Year 1			Year 2		
the	they	one	door	gold	plant
a	be	once	floor	hold	path
do	he	ask	poor	told	bath
to	me	friend	because	every	hour
today	she	school	find	great	move
of	we	put	kind	break	prove
said	no	push	mind	steak	improve
says	go	pull	behind	pretty	sure
are	so	full	child	beautiful	sugar
were	by	house	children	after	eye
was	my	our	wild	fast	could
is	here		climb	last	should
his	there		has	most	past
I	where		you	only	father
you	love		old	both	class
some	come		cold	old	grass
				pass	any
					many
					clothes
					busy
					people
					water
					again
					half
					money
					Mr
					Mrs
					parents
					Christmas
					everybody
					even



Year group email address - no contact book

year1@woodfieldprimary.com

Year group email	School office email
<ul style="list-style-type: none">• Timetable• School trips• Reading books• Friendships• Lost property	<ul style="list-style-type: none">• Parent pay queries• Absence• Arrangements for pick up• Appointments• Club arrangements (if child is starting a new club so they can be directed to the correct location)

Please be aware that although this email will be regularly checked, the teachers are in class so please allow time for a response.

Teachers are also available for an informal discussion after school, once the children have been dismissed.

Class Assemblies

Year 1 Class Assemblies

Bumblebees Class – Thursday 12th March 2026 at 9am

Butterflies Class – Thursday 19th March 2026 at 9am

The assemblies will last for approximately 15 minutes.

Reminders

- ▶ Please ensure all items of clothing are clearly named.
- ▶ Children to have a water bottle in school each day.
- ▶ Children will receive fruit every day from the government free fruit scheme.
- ▶ Morning work starts at 8:35 am and this is an important time for the children to recap previous learning, read with an adult or complete individual tasks. If possible, the children should arrive in school as close to this time to enable them to access this learning. **Gates close at 8:45 am.**
- ▶ Please take the time to read the weekly newsletter to ensure you are kept up to date with year group news. This is sent each Friday via MCAS.
- ▶ Please also keep an eye on the Class Dojo app for messages and photos.



ClassDojo

Please label all jumpers/cardigans/PE hoodies!



STIKINS[®] Name Labels
SIMPLY STICK IN & STAY IN



Save Time & Money **Reduce Lost Property**

Quote Our Fundraising Number To Raise Funds For School

WWW.STIKINS.CO.UK



Thank you!
We look forward to working with you.

The Year 1 team